

### Features

#### Fiber Connector Inspection

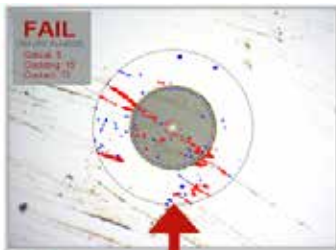
- USB connectivity and included ODM software package provide simple plug-and-play image-saving for closeout reporting
- Comprehensive PASS/FAIL analysis compliant with IEC 61300-3-35 industry standard

#### Connector Cleaning

- Complete wet/dry cleaning system ensures the cleanest fiber endfaces possible
- Materials included for 1000 connector cleanings

#### dB Loss Testing

- Optical Power Meter with archiving ability and streaming data via USB
- Two included light sources provide telecom industry standard wavelengths for testing loss in single mode and multimode systems
- Includes all patchcords, adapters for SC and LC connector systems



### Description

ODM's TTK 500 provides test technicians and contractors with high-end hardware and software to guarantee industry standard compliance in fiber optic-based telecommunications. The TTK 500 contains all equipment necessary to inspect, clean, and test fiber optic cables, while ODM's proprietary software allows for professional closeout reporting.

The VIS 300 Monitor and Fiber Inspection Scope allow testers to evaluate and grade connector endfaces using IEC standards before joining fibers, guaranteeing a clean and reliable optical connection.

To properly clean connector endfaces that fail to meet the IEC standard, the TTK 500 contains a complete system of "one-click" dry cleaners and the SqR Cleaning Pad with Fiber Wash Pen for wet/dry cleaning. When used correctly, these tools can clean endfaces to meet the IEC 61300-3-35 industry standard.

The RP 460 Optical Power Meter, when used in conjunction with the DLS 355 or DLS 350 Light Sources, offers complete end-to-end dB loss readings for the most commonly used transmission wavelengths for wireless carriers. The RP 460 stores thousands of readings in non-volatile memory, so technicians can be sure that all data is secure. The Optical Power Meter can be used in conjunction with InSpec™ software to provide live readings for image archiving and closeout loss reports.

# Components & Functions

MODEL	DESCRIPTION	APPLICATION
DLS 350	Dual LED Source 850nm/1300nm with SC Connector output	Multimode fiber light source for dB loss testing
DLS 355	Dual Laser Source 1310nm/1550nm SC Conn.	Single mode fiber light source for dB loss testing
RP 460	Power Meter w/ Zero dB/Set Ref, 1000 data point store & USB download	Power meter used with light source for dB loss measurement and storage, and USB transfer to PC for closeout documentation
VIS 300	Video Inspection Scope with 3.5" monitor w/USB and InSpec™ Software	Portable connector inspection device to view connector endfaces and ensure connectors meet IEC standard after proper cleaning
AC 029	LC Adapter for RP460 Optical Power Meter	Allows LC connection to optical power meter
AC 300	CR2 Battery Kit / 5 per pack	Spare Battery Kit
AC 500	LC-SC, SM, 9/125 Fiber, 1 Meter Cable	Fiber patch cord to allow calibration of test instruments for complete system dB loss test
AC 502	LC-LC, SM, 9/125 Fiber, 2 Foot Cable	Fiber patch cord to allow calibration of test instruments for complete system dB loss test
AC550	LC-SC, MM 50/125 fiber	Fiber patch cord to allow calibration of test instruments for complete system dB loss test
AC552	LC-LC, MM 50/125 fiber	Fiber patch cord to allow calibration of test instruments for complete system dB loss test
AC 600	SC-SC Adapter	SC adapter to allow legacy(Clearwire) DLS 355 to test dB loss
AC 602	LC-LC Adapter	LC adapter to allow access to LC duplex connector on Optical Jumper Cable
AC 800	Two (2) USB cables	Download to laptop for closeout documentation
CK 125	Cleaning Kit - fiber wash pen, wipes, 1.25mm swabs, 2.5mm swabs	Complete Wet/Dry cleaning system for all connector endfaces including ODC connectors and System/RF modules
AC 089	One Click Connector Cleaner	For LC connector ends and bulkheads for quick "dry" clean only
AC 012	ODM 17" Hard Carry Case	Large protective carrying case for all instruments and accessories



Visual Endface Inspection



dB Loss Testing



Closeout Documentation



Wet/Dry Cleaning

## Options

MODEL	INCLUDES
AC 063 – Accessory Kit for Ericsson/ODC Cable	Fiber optic assembly, ODC-2 socket to LC, torque wrench for H & S cables, ODC Adapter Kit with ODC pin and socket adapters, assembly LC clipped – LC and SC Connectors Cable, Loopback with lanyard in soft ODM pouch.
AC 065 Accessory Kit	VF 610 635nm red laser in ODM Single Instrument Pouch, Assembly LC Clipped – LC and SC cable, loopback with lanyard.



AC 063



AC 065



**Optical Design Manufacturing, Inc.**

143 Lake Street, Suite 1E, Laconia, NH 03246  
 Phone: (603) 524-8350 FAX: (603) 524-8332

www.odm-inc.com  
 sales@odm-inc.com

